

THE ALL-NEW, ALL-ELECTRIC
2021 MUSTANG

mach-e

PACKAGING GUIDE



Preproduction models shown throughout. Delivery starting late 2020.



Mustang Mach-E Launches Bold, New Electric Era With a Fast, Fun Driving Experience

The All-New Mustang Mach-E makes more than a statement. Mustang Mach-E accomplishes the rare feat of combining head-turning design, dynamic performance and forward-looking technology in an electrified SUV. Mustang Mach-E takes a leap forward with a targeted, available 300 miles of range, exhilarating 0-60 mph times and aggressive design inside and out. It's fast — it's fun — it's freedom.

2021 MUSTANG MACH-E HIGHLIGHTS

- 10.2" digital instrument cluster screen
- 15.5" center-stack color touchscreen
- 29.7 cu. ft. of cargo space behind the second-row seats⁽¹⁾
- 59.7 cu. ft. of cargo space behind the first-row seats⁽¹⁾
- All-new Mustang-inspired styling
- Targeted EPA-estimated ranges from 210 miles to 300 miles⁽²⁾
- Ford Co-Pilot360™ Technology
- Front trunk with 4.7 cu. ft. of storage⁽¹⁾
- Intelligent Adaptive Cruise Control with Speed Sign Recognition
- Pony projection lamps
- Seating for five
- SYNC® 4A with Enhanced Voice Recognition and Connected Navigation
- Five models: Select, California Route 1, Premium, First Edition, GT
- Three selectable Drive Experiences
- Wireless charging pad⁽³⁾ for compatible phones

NEW TO THE MUSTANG BRAND

- Access to nationwide FordPass™ Charging Network of public chargers
- Active Park Assist 2.0
- All-wheel drive (eAWD)
- Charging equipment: standard Ford Mobile Charger (cord) and available Ford Connected Charge Station (wall unit)
- DC Fast Charge capability
- E-Latch push-button door openers
- Hands-free, foot-activated rear liftgate
- Over-The-Air Updates
- Phone As A Key
- Reverse Brake Assist
- Rotary gear shift dial



NOTE: See pages 10-14 for specific feature availability.

MUSTANG-CALIBER PERFORMANCE

POWER

Mustang Mach-E acceleration could be described as exhilarating. It could also be described as aggressive and immediate. But when customers tap on the accelerator and feel the nearly instant torque rushing to the wheels, they may not remember these words. They'll be too busy enjoying the surge of power that drives Mustang Mach-E from 0-to-60 mph in the mid-5-second range.⁽⁴⁾

Mustang Mach-E will offer the customer two battery choices to meet their performance needs — Standard Range and Extended Range — both available with a RWD or AWD drivetrain.

PERFORMANCE BY THE NUMBERS

Battery/Drivetrain	Standard Range RWD	Standard Range AWD	Extended Range RWD	Extended Range AWD
Horsepower/kW	266/198	266/198	290/216	346/258
Torque (lb.-ft.)	317	428	317	428
Model Availability	Select, Premium	Select, Premium	California Route 1, Premium	Premium, First Edition

TARGETED EPA-ESTIMATED RANGES

	Standard Range ⁽²⁾	Extended Range ⁽²⁾
RWD	230 miles	300 miles
AWD	210 miles	270 miles

MACH-E BATTERIES

Standard Range: 68 kWh of usable capacity

Extended Range: 88 kWh of usable capacity

eAWD: WHY IT'S FASTER

All-wheel drive (eAWD) in an electric vehicle creates a unique opportunity. It's not just a drive system to improve traction. Mustang Mach-E AWD models use a primary electric motor on the rear axle and a secondary electric motor on the front axle to boost performance. Torque can be applied to either axle at any time, so both motors can work together to provide powerful acceleration.

(1) Cargo and load capacity limited by weight and distribution and varies by model.

(2) Targeted EPA-estimated ratings. Actual range varies with conditions, such as external elements, driving behaviors, vehicle maintenance and lithium-ion battery age.

(3) Qi wireless charging may not be compatible with all phones.

(4) AWD estimate based on preliminary Ford testing.

Introduction	2
Power and Battery	3
Mustang Mach-E Exclusives	4 – 5
Tech-Forward Thinking	6 – 7
Many Ways to Charge	8 – 9
Model Lineup	10 – 13
Select	10 – 11
California Route 1	12
Premium and First Edition	13
Color and Trim	14
Mustang DNA	15
Additional Resources	16



MUSTANG MACH-E EXCLUSIVES

Mustang Mach-E offers plenty of surprise-and-delight features — some of which are unique to electric vehicles. Demonstrating these exclusive Mustang Mach-E features will help customers appreciate EV benefits and, ultimately, help lead to purchases.

THE DRIVE EXPERIENCES



Three Selectable Drive Mode settings allow owners to change the driving experience, within easy reach on the center-stack touchscreen. Each drive mode setting brings to life the senses of touch, sound and sight.

ENGAGE

Normal drive mode provides a balanced combination of acceleration and deceleration response. Instrument cluster displays soft blue ambient lighting.

WHISPER

Seamless, quiet, calm drive mode with lighter "coasting" deceleration response. Instrument cluster displays blue ambient lighting.

UNBRIDLED

More aggressive throttle response and vehicle sound with stronger deceleration effects. Instrument cluster displays orange ambient lighting.



ONE-PEDAL DRIVING MODE (1PD)

In certain driving situations, the driver can switch to 1PD on the center-stack touchscreen and control the speed of a Mustang Mach-E with the accelerator pedal only.

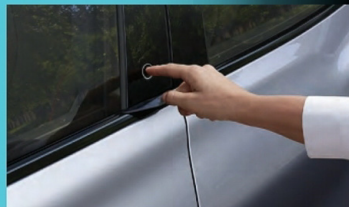
In this mode, Mustang Mach-E slows down dramatically quicker when the driver releases the accelerator pedal and regenerative braking takes full effect. The vehicle can even coast down to a complete stop. Drivers don't have to use the brake pedal, but it still operates normally if needed.

One-pedal driving can help restore more energy to the battery and provide a solution to constantly switching between pedals in stop-and-go traffic.



E-LATCH

The streamlined appearance of the Mustang Mach-E can be deceiving when approached. But, once the vehicle recognizes the driver, it presents an illuminated button. Then, with one simple touch of the button, the door pops open. The Mustang Mach-E also knows when the driver leaves — automatically locking all doors.



PANORAMIC FIXED-GLASS ROOF

Mustang Mach-E wants its customers to enjoy the natural light of the day — or the glow of moonbeams at night — through the panoramic fixed-glass roof.

This is the largest glass roof in a Ford vehicle — and the expansive view isn't the only benefit. The special reflective (low-emissivity) coating on the glass and an inner layer combine to help protect the cabin from infrared and ultraviolet light. The reflective coating helps keep the cabin cool in the summer and warm in the winter.



PLENTY OF CARGO SPACE

Yes, this all-electric Mustang Mach-E is an SUV that offers plenty of space for passengers and gear. Mustang Mach-E can seat five people comfortably or customers can fold down the second-row seats to enlarge the rear cargo area. The interior offers 29.7 cu. ft. of cargo space⁽¹⁾ behind the second row and 59.7 cu. ft. of space⁽¹⁾ with the rear seats folded down. Every Mustang Mach-E has an adjustable load floor in the rear and a hidden space to store the charge cord.



FRONT TRUNK

When customers lift the hood of the all-new Mustang Mach-E they will know immediately that this vehicle contains hidden surprises. Instead of the usual components in an engine bay — you know, like the engine — they will find the front trunk.

It's a washable, 4.7-cu. ft. storage box with room for groceries or other small items.



(1) Cargo and load capacity limited by weight and weight distribution and varies by model.

NOTE: See pages 10-14 for specific feature availability.

GT MODEL COMING SOON

For customers who desire even more exhilaration, the GT model is scheduled to start arriving at dealerships in late summer 2021.

The GT model pushes the performance boundaries with a targeted 459 horsepower and pulsating estimated 0-60 mph times of under 4 seconds.⁽²⁾



(2) Based on preliminary Ford testing.

TECH-FORWARD THINKING

Mustang Mach-E will be a connected vehicle with a full suite of Ford Co-Pilot360™ Technology, SYNC® 4A with Enhanced Voice Recognition and Connected Navigation, and the capability to accept over-the-air updates to keep the vehicle's infotainment system and other functionality as advanced as possible.

FORD CO-PILOT360 2.0

- Auto High Beams
- BLIS® (Blind Spot Information System) with Cross-Traffic Alert
- Lane-Keeping System
- Post-Collision Braking
- Pre-Collision Assist with Automatic Emergency Braking (AEB), Pedestrian Detection and Forward Collision Warning with Dynamic Brake Support
- Rear View Camera
- Reverse Brake Assist
- Reverse Sensing System

FORD CO-PILOT360 ASSIST 2.0

- Intelligent Adaptive Cruise Control with Stop-and-Go, Lane Centering and Speed Sign Recognition
- Evasive Steering Assist
- Intersection Assist
- Voice-Activated Touchscreen Navigation System

ADDITIONAL FORD CO-PILOT360 TECHNOLOGY

- Ford Co-Pilot360 Active 2.0 Prep Package
 - Active Drive Assist Prep Kit
 - Active Park Assist 2.0

Note: Active Drive Assist functionality expected 3rd quarter 2021 calendar year. Separate payment for feature software required to activate full functionality at that time.

- 360-Degree Camera with split-view display and front washer

INTELLIGENT ADAPTIVE CRUISE CONTROL

Included in Ford Co-Pilot360 Assist 2.0, the Adaptive Cruise Control system will feature Stop-and-Go, Lane Centering and Speed Sign Recognition. The system will also be backed up by Evasive Steering Assist, which helps the driver avoid a potential collision with a slower or stopped vehicle ahead by reducing the steering effort.

SPEED SIGN RECOGNITION

Once the driver sets the vehicle speed, the system will automatically adjust vehicle speed if the system detects a speed limit sign below the set speed. The system can be set to maintain a speed above or below the scanned signs, or the driver can disable this feature.

ACTIVE PARK ASSIST 2.0

The Active Park Assist 2.0 system controls shifting, steering, braking and acceleration to help Mustang Mach-E navigate into a parallel or perpendicular space. The driver simply touches the activation command on the screen and waits for the prompts. Active Park Assist 2.0 also helps the driver get out of a tight spot with park out assist.

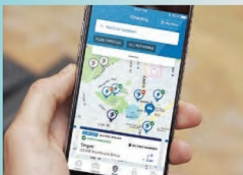
CONNECTED MUSTANG MACH-E

- 10.2" digital instrument cluster screen
- EV status screens with live info, such as estimated remaining range
- FordPass Connect™ with Wi-Fi connectivity
- Phone As A Key
- SYNC 4A with Enhanced Voice Recognition and Connected Navigation
 - 15.5" center-stack color touchscreen operates similar to a smartphone with up to six shortcuts to recently used applications
 - AppLink® Convenience Controls
 - Digital Assistant with Enhanced Voice Recognition and Connected Navigation
 - Smarter voice-activated searches
 - Wireless Apple CarPlay® and Android Auto™ compatibility



NOTE: See pages 10-14 for specific feature availability.

Apple CarPlay is a trademark of Apple Inc., registered in the U.S. and other countries.
Android Auto is a trademark of Google Inc.



FORDPASS™

Customers who download the FordPass App and activate their vehicle, will maintain a connection to their Mustang Mach-E.⁽¹⁾ From FordPass, owners can program home charging times with a Ford Connected Charge Station, check their current charge status and find a charging station in the FordPass Charging Network. A Mustang Mach-E owner will also be able to use Departure Times to precondition the vehicle for warming up or cooling down before driving.



SYNC 4A INTERACTIVITY FEATURES⁽²⁾

- Many vehicle functions, such as climate control, will appear on the 15.5" center-stack screen as soft keys rather than physical buttons
- The center-stack screen will show up to six recently used applications, reducing the need to switch between menus
- For example, the Voice-Activated Touchscreen Navigation System, EV range status, phone, streaming music and other applications could be available at a single touch
- Also, Mustang Mach-E allows multiple user profiles so different drivers can personalize their settings
- The cloud-connected Digital Assistant allows customers to give more conversational voice commands, such as "OK, Ford: Where is the nearest coffee shop?"

NAVIGATION UPGRADES

SYNC 4A technology with Enhanced Voice Recognition and Connected Navigation will use cloud connectivity to deliver a more robust navigation experience. Navigation maps on the center-stack screen will provide the latest information on traffic and construction zones, in addition to directions. The system regularly refreshes to capture the latest possible developments along the driver's route.

OVER-THE-AIR UPDATES

Customers like convenience, and with Mustang Mach-E, certain software-based systems can be updated while the vehicle is parked or charging at home. Automatic over-the-air software updates are designed to provide effortless, wireless improvements to vehicle functions. When an Over-The-Air Update is sent, a reliable Wi-Fi connection ensures that the vehicle receives the fastest possible update. These updates can help improve the ownership experience and may reduce the need for service visits.



- (1) FordPass Connect (optional on select vehicles), the FordPass App and complimentary Connected Services are required for remote features (see FordPass Terms for details). Connected Service and features depend on compatible AT&T network availability. Evolving technology/cellular networks/vehicle capability may limit functionality and prevent operation of connected features. Connected Services excludes Wi-Fi hotspot.
- (2) Don't drive while distracted. Use voice-operated systems when possible; don't use handheld devices while driving. Some features may be locked out while the vehicle is in gear. Not all features are compatible with all phones.

MANY WAYS TO CHARGE

Mustang Mach-E customers will have multiple ways to charge their battery-powered electric vehicle (BEV). Typically, EV owners charge their vehicles at home about 80 percent of the time. Mustang Mach-E customers will have charging options both at home and on the road.

CHARGING AT HOME

At home, customers can charge with their basic 120-volt outlet or a 240-volt outlet (recommended for faster charging) on dedicated circuits.

Choice of charging with:

1. Ford Mobile Charger (standard cord)
2. Ford Connected Charge Station (optional wall unit)

FORD MOBILE CHARGER

The standard Ford Mobile Charger (a portable charge cord) is included with every Mustang Mach-E vehicle and can be plugged into a 120-volt household-style outlet or a 240-volt outlet. It has a 20-foot cable and can provide a charging output of up to 32 amps on a dedicated circuit. It's important to remind customers the 240-volt circuit must be free from high-capacity appliances.

Charge Level	Charging Power	Charging Source	Miles of Range per Hour of Charge ⁽¹⁾	Time to Fully Charge ⁽²⁾
Level 1 with Ford Mobile Charger (standard with vehicle)	120 volts/ 12 amps	Conventional household outlet	3	95+ hours
Level 2 with Ford Mobile Charger (standard with vehicle)	240 volts/ 32 amps	Dedicated household outlet (NEMA 15-50 240V)	21	14.1 hours
Level 2 with available Ford Connected Charge Station	240 volts/ 48 amps	Ford Connected Charge Station installed by a professional in garage or driveway	30	10.1 hours
Level 3 (DC Fast) on the road	DC Fast Charge/ 150 kW	Stations found through FordPass Charging Network	61 miles in 10 minutes	45 minutes (to 80%)



FORD MOBILE CHARGER



FORD CONNECTED CHARGE STATION



PUBLIC CHARGING STATION

FORD CONNECTED CHARGE STATION

Mustang Mach-E owners can order their own Ford Connected Charge Station (240-volt/48-amp) on FordParts.com or when they buy their vehicle online or at the dealership. The cost of the Ford Connected Charge Station can be included in the customer's Ford Credit contract.⁽³⁾ Customers can arrange for installation through Amazon Home Services at their convenience.

⁽¹⁾ Extended Range battery, RWD configuration. Actual range varies with conditions, such as external elements, driving behaviors, vehicle maintenance and lithium-ion battery age. Final EPA-estimated ratings available later in 2020.

⁽²⁾ Extended Range battery. Charge times vary. See owner's manual for details.

⁽³⁾ For Options contracts, Ford Connected Charge Station cannot be resold. The full purchase price must be paid within the term of the contract. Does not include installation.

NOTE: See pages 10-14 for specific feature availability.

CHARGING ON THE ROAD

Ford makes charging your Mustang Mach-E away from home easy by providing access to multiple charging networks all through one account.

FORDPASS™ CHARGING NETWORK

The FordPass Charging Network gives Mustang Mach-E customers access to the largest public charging network in North America⁽⁴⁾ — more than 13,500 charging stations and growing. Owners who register through the FordPass App can access Electrify America public chargers and many other charging networks using the same account.



FINDING CHARGERS ON FORDPASS

Mustang Mach-E customers will be able to use the FordPass App on their smartphone to locate a public charger, check availability, receive updates on their vehicle's charging status and pay for the charge.



DC FAST CHARGING

Customers in need of a charge while on the road, but short on time, can stop at a DC Fast Charge station located via FordPass. DC Fast Charging can recharge the Mustang Mach-E battery to about 80 percent in around 45 minutes (estimates based on Extended Range model). Beyond that, charging slows to protect the battery.



ROADSIDE ASSISTANCE

If out of charge on the road, Mustang Mach-E customers can contact Ford Roadside Assistance to have the vehicle towed to their home, a public charging station or an EV Certified Ford dealership within 35 miles of their roadside location.

Customers can find Roadside Assistance on their FordPass App or call (800) 241-3673.

MUSTANG MACH-E CHARGE PORT

DC Fast Charging requires a specific plug configuration, which is accessible by flipping down the cover in the charge port for the two additional pins. This SAE Combo-style plug complies with all DC Fast Charging stations in the FordPass Charging Network.

CHARGE STATUS LIGHT

Every Mustang Mach-E charge port will feature an LED light circle to indicate the level of charging after plugging in. The light has five segments, each representing a 20 percent charge level. When the charge level reaches 100 percent, the five lit segments form a circle.

⁽⁴⁾ Based on automotive manufacturers that sell all-electric vehicles and have publicly announced charging networks. Department of Energy data used.

MODEL LINEUP **SELECT** (100A) STANDARD EQUIPMENT

PERFORMANCE AND HANDLING

- Standard Range Battery — lithium-ion with 68 kWh usable capacity
- Primary electric motor (rear) with 9.05:1 final drive ratio
- 225/60R18 all-season tires
- 266 hp/198 kW/317 lb.-ft. of torque
- Active Grille Shutters
- Auto Hold
- Electric parking brake
- Electric power-assisted steering (EPAS)
- Ford Mobile Charger dual-power charge cord
- Rear-wheel drive (RWD)
- Single-speed automatic transmission

TECHNOLOGY

- Audible Pedestrian Alert System
- Ford Co-Pilot360™ 2.0
 - Auto High Beams
 - BLIS® (Blind Spot Information System) with Cross-Traffic Alert
 - Lane-Keeping System
 - Post-Collision Braking
 - Pre-Collision Assist with Automatic Emergency Braking (AEB), Pedestrian Detection and Forward Collision Warning with Dynamic Brake Support
 - Rear View Camera
 - Reverse Brake Assist
 - Reverse Sensing System
- Ford Co-Pilot360 Assist 2.0
 - Evasive Steering Assist
 - Intelligent Adaptive Cruise Control with Stop-and-Go, Lane Centering and Speed Sign Recognition
 - Intersection Assist
 - Voice-Activated Touchscreen Navigation System
- FordPass Charging Network, 2 years complimentary access, 250 kWh of fast charging with Electrify America
- FordPass Connect™ 4G LTE modem with Wi-Fi hotspot connection for up to 10 devices
- Forward Sensing System
- Phone As A Key
- SYNC® 4A with Enhanced Voice Recognition and Connected Navigation
 - 15.5" center-stack color portrait touchscreen
 - Apple CarPlay® and Android Auto™ compatibility
- Wireless charging pad for compatible phones

EXTERIOR

- Beltline — high gloss black
- Door cladding, front/rear — molded black
- E-Latch door handles
- Fascia, front and rear
 - Upper — body-color
 - Lower — black, molded-in-color with body-color insert
- Front trunk
- Grille, front appliqué insert — black, molded-in-color
- Liftgate — manual
- Mirrors, sideview
 - Body-color caps
 - Heated power glass
 - Manual-folding
 - LED turn signal indicators
 - Pony projection lamps
- Rear spoiler — black-painted
- Rocker panel — black, molded-in-color
- Tire Inflator and Sealant Kit
- Wheel center cap — brushed aluminum with high gloss black Pony graphic
- Wheel lip moldings, front/rear — black, molded-in-color
- Wheels — 18" Carbonized Gray-painted aluminum
- Wipers, front — rain-sensing
- Window molding, upper — black
- Windshield — laminated glass
- Windshield wiper de-icer

INTERIOR

- Audio
 - AM/FM stereo
 - MP3 capable
 - SiriusXM® Radio with 360L
 - Speakers (6)
 - Speed-compensated volume
- Beverage holders — four (4)
 - Two (2) front
 - Two (2) rear
- Climate control
 - Cabin particulate air filter
 - Dual-zone electronic automatic temperature control
 - Second-row air registers
- Console — center floor with pedestal armrest
- Grab handles
 - Driver and passenger
 - Second-row — two (2), include coat hooks
- Instrument panel
 - 10.2" digital cluster screen
 - Message center
 - Outside temperature display
 - Trip computer
- Lighting
 - Front map lights
 - Rear cargo area light
 - Second-row dome light
- Powerpoints, 12-volt
 - Front console (1)
 - Cargo area (1)
- Rotary gear shift dial
- Seats
 - 4-way manual front passenger (fore/aft with manual recline)
 - 8-way power driver (fore/aft, up/down, power lumbar, power recline)
 - ActiveX™ Seating Material
 - Five-passenger seating
 - Second-row 60/40 split-fold-flat, fold-down center armrest with beverage holders — two (2)
- Seat back map pocket — driver and passenger
- Scuff plates, front door — black, molded-in-color with Pony graphic
- Steering column — manual tilt/telescoping
- Steering wheel
 - Soft vinyl-wrapped
 - Steering wheel-mounted controls
- Storage
 - Front row
 - Glove box
 - Open media bin
 - Overhead console with sunglasses storage
 - Storage bins on front doors
 - Under the center console pedestal armrest
 - Cargo area
 - Adjustable load floor
 - Cargo cord storage integrated under load floor
- Sun visors, sliding with illuminated vanity mirrors — driver and passenger
- Windows, power
 - Global open/close
 - One-touch-up/-down (front and rear)
- USB ports, smart-charging
 - 1st-row (one Type A, one Type C)
 - 2nd-row (one Type A, one Type C)

Apple CarPlay is a trademark of Apple Inc., registered in the U.S. and other countries.
 Android Auto is a trademark of Google Inc.
 Sirius, XM and all related marks and logos are trademarks of Sirius XM Radio Inc.

SAFETY AND SECURITY

- Advanced Security Pack
 - Inclination/intrusion sensors
 - SecurLock® Passive Anti-Theft System
- AdvanceTrac® with RSC® (Roll Stability Control™)
- Airbags
 - Driver knee
 - Dual-stage front
 - Front-seat side
 - Rear-seat side
 - Safety Canopy® System
- Belt-Minder® — driver- and front-passenger
- Child-safety locks — rear doors
- Curve Control
- Defroster — electric rear-window
- Four-wheel disc brakes with Anti-Lock Brake System (ABS) and Regenerative Braking System
- Head restraints
 - Front, 2-way adjustable
 - 2nd-row center, 2-way adjustable
 - 2nd-row outboard, fixed
- Headlamps
 - Auto High Beams (included with Ford Co-Pilot360 2.0)
 - Autolamp with LED reflector low and high beams with courtesy delay
 - Wiper-activated
- Illuminated Entry System
- Individual Tire Pressure Monitoring System (TPMS)
- LATCH (Lower Anchors and Tether Anchors for Children) — 2nd-row outboard seating positions
- Mirror, interior — auto-dimming
- MyKey®
- Personal Safety System™
- Post-Collision Braking (included with Ford Co-Pilot360 2.0)

- Pre-Collision Assist with Automatic Emergency Braking (AEB), Pedestrian Detection, Forward Collision Warning with Dynamic Brake Support (included with Ford Co-Pilot360 2.0)
- Rear View Camera (included with Ford Co-Pilot360 2.0)
- Safety belt usage sensors

- Safety belts — height-adjustable front-row with pretensioners/Energy Management System
- SOS Post-Crash Alert System™
- Taillamps — LED with sequential turn signals
- Traction control



WHEELS



18" Carbonized Gray-painted
aluminum
Standard



19" Shadow Silver-painted
aluminum with high gloss
black-painted aero cover
Incl. in Comfort/Appearance Package

STAND-ALONE OPTION

- All-wheel drive (eAWD; incl. secondary electric front motor)

AVAILABLE EQUIPMENT

Comfort/Appearance Package (67A)

- 19" Shadow Silver-painted aluminum wheels with high gloss black-painted aero cover
- 225/55R19 all-season tires
- 6-way manual passenger seat
- Black painted roof
- Cargo area cover
- Heated steering wheel and front seats
- Hands-free, foot-activated power liftgate
- Memory driver seat
- Memory power-folding sideview mirrors

Note: Not available with Comfort/Technology Package (67V).

Note: Black-painted roof not included when Shadow Black exterior paint (G1) is ordered.

Comfort/Technology Package (67V)

- Ford Co-Pilot360 Active 2.0 Prep Package
 - Active Drive Assist Prep Kit
 - Active Park Assist 2.0

Note: Active Drive Assist functionality expected 3rd quarter 2021 calendar year. Separate payment for feature software required to activate full functionality at that time.

- 360-Degree Camera with split-view display and front washer
- 6-way manual passenger seat
- Cargo area cover
- Hands-free, foot-activated power liftgate
- Heated steering wheel and front seats
- Memory driver seat
- Memory power folding sideview mirrors

MODEL LINEUP CALIFORNIA ROUTE 1 (200A) STANDARD EQUIPMENT

INCLUDES ALL MUSTANG MACH-E SELECT 100A EQUIPMENT, PLUS:

PERFORMANCE AND HANDLING

- Extended Range Battery — lithium-ion with 88 kWh usable capacity
- 290 hp/216kW/317 lb.-ft. of torque

TECHNOLOGY

- Ford Co-Pilot360™ Active 2.0 Prep Package
 - Active Drive Assist Prep Kit
 - Active Park Assist 2.0

Note: Active Drive Assist functionality expected 3rd quarter 2021 calendar year. Separate payment for feature software required to activate full functionality at that time.

- 360-Degree Camera with split-view display and front washer

EXTERIOR

- California Route 1 badge
- Door cladding, front/rear — black-painted
- Fascia, front and rear lower — black-painted with body-color insert
- Mirrors, sideview
 - Black-painted caps
 - Memory
 - Power-folding
- Panoramic fixed-glass roof, includes infrared reflective (IRR) windshield
- Wheel lip moldings, front/rear — black-painted
- Wheels — 18" high gloss black-painted aluminum with low gloss black aero cover

INTERIOR

- Cargo area cover
- Memory driver seat



WHEEL



18" High gloss black-painted aluminum with low gloss black aero cover
Standard



MODEL LINEUP **PREMIUM** (300A) STANDARD EQUIPMENT

INCLUDES ALL MUSTANG MACH-E SELECT 100A EQUIPMENT, PLUS:

PERFORMANCE AND HANDLING

- 225/55R19 all-season tires

EXTERIOR

- Door cladding, front/rear — black-painted
- Grille, front appliqué insert — black-painted
- Hands-free, foot-activated power liftgate
- Mirrors, sideview
 - Black-painted caps
 - Memory
 - Power-folding
- Panoramic fixed-glass roof, includes infrared reflective (IRR) windshield
- Wheel lip moldings, black-painted, front/rear
- Wheels — 19" machined-face aluminum with high gloss black-painted pockets
- Windows, front-row side — acoustic-laminate glass

TECHNOLOGY

- Ford Co-Pilot360 Active 2.0 Prep Package
 - Active Drive Assist Prep Kit
 - Active Park Assist 2.0
- 360-Degree Camera with split-view display and front washer

Note: Active Drive Assist functionality expected 3rd quarter 2021 calendar year. Separate payment for feature software required to activate full functionality at that time.



INTERIOR

- Ambient lighting
- Audio
 - B&O Sound System by Bang & Olufsen
 - Speakers (10)
 - Front (4)
 - Rear (4)
 - Center (1)
 - Subwoofer (1)
- Cargo area cover
- Heated steering wheel
- Seats
 - 8-way power front passenger (fore/aft, up/down, power lumbar, power recline)
 - Heated front-row
 - Memory driver
- ActiveX™ Seating Material, perforated
- Scuff plates, front door — aluminum inserts with Pony graphic and unique lettering

SAFETY AND SECURITY

- Head restraints
 - Front, 4-way adjustable
- Headlamps
 - LED Projector with LED Signature Lighting

BANG & OLUFSEN® 2020 and B&O® 2020. BANG & OLUFSEN™ and B&O™ are registered trademarks of Bang & Olufsen Group. Licensed by Harman Becker Automotive Systems Manufacturing KfL. All rights reserved.

WHEEL



19" Machined-face aluminum with high gloss black-painted pockets
Standard

STAND-ALONE OPTIONS

- Extended Range Battery — lithium-ion with 88 kWh usable capacity
- All-wheel drive (eAWD; incl. secondary electric front motor)

AVAILABLE EQUIPMENT

First Edition (301A)

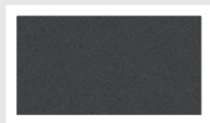
- Extended Range Battery — lithium-ion with 88 kWh usable capacity
- 346 hp/258 kW/428 lb.-ft. of torque
- All-wheel drive (eAWD; incl. secondary electric front motor)
- Body-color-painted sideview mirror caps
- Body-color-painted wheel lip moldings
- Brushed-aluminum pedal covers
- Front door-sill scuff plates — aluminum inserts with First Edition lettering
- Perforated ActiveX Seating Material with unique color stitching
- Red-painted front and rear brake calipers

Note: First Edition available only in Carbonized Gray Metallic, Grabber Blue and Rapid Red Metallic Tinted Clearcoat exterior colors.



COLOR AND TRIM

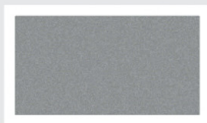
EXTERIOR COLORS



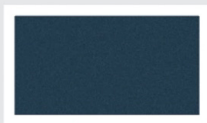
Carbonized Gray⁽¹⁾



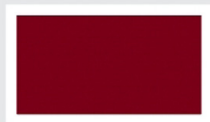
Grabber Blue⁽¹⁾
First Edition only



Iconic Silver⁽¹⁾



Infinite Blue Metallic Tinted Clearcoat⁽²⁾



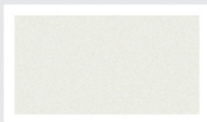
Rapid Red Metallic
Tinted Clearcoat⁽²⁾



Shadow Black



Space White⁽¹⁾



Star White Metallic Tri-coat⁽²⁾

(1) Metallic paint.

(2) Extra-cost option.

INTERIOR COLOR AND SEATING AVAILABILITY

SELECT (100A)

Black Onyx
ActiveX™ Seating Material

CALIFORNIA ROUTE 1 (200A)

Black Onyx
ActiveX Seating Material

PREMIUM (300A)

Light Space Gray
Perforated ActiveX Seating Material

Black Onyx
Perforated ActiveX Seating Material

FIRST EDITION (301A)

Black Onyx with ST-Red Line Accent Stitching
Perforated ActiveX Seating Material

Black Onyx with Grabber Blue Accent Stitching
Perforated ActiveX Seating Material

MUSTANG DNA

Mustang owners are intensely loyal and have passionate opinions about their favorite sports car. You can expect some animated discussions about Mustang Mach-E. An all-electric SUV with the Mustang name?

If Mustang Mach-E is going to wear the famous Pony emblem, it can't just have the unmistakable Mustang styling cues. It has to drive like a Mustang, feel like one and have the same performance soul that customers recognize.

The 2021 Mustang Mach-E shares classic attributes with its gas-powered sibling with both its exciting performance characteristics and driver-focused, dynamic interior. The rear-wheel-drive architecture (or available all-wheel drive) provides the acceleration and low center of gravity inherent to the Mustang DNA. Most important, Mustang Mach-E performs and handles in an aggressive way worthy of the brand's heritage.

Before the development team could definitively call it a Mustang, they had to earn the approval of the ultimate judge: Bill Ford Jr. When the team achieved that goal, the consensus was complete: "It's a Mustang."

Mustang Mach-E doesn't just set the pace for Ford electric vehicles. We like to think it sets the pace for all electric vehicles. Fifty-five years after the first Mustang defined the Pony car, the all-new, all-electric Mustang Mach-E is designed to embody fast, fun and freedom to an all-new generation of Mustang owners.

AVAILABLE FEDERAL TAX CREDIT

It's expected that Mustang Mach-E will be eligible for a \$7,500 federal tax credit. Customers can find out whether their Ford EV qualifies for available federal and state incentives at two online locations. You can check the Department of Energy website by visiting afdc.energy.gov/laws/search or the EPA website at [fueleconomy.gov/feg/taxevb.shtml](https://www.epa.gov/feg/taxevb.shtml) to check federal tax credit availability.



ADDITIONAL RESOURCES

For more information about Mustang Mach-E, check out Ford eSourceBook on the Retailer Education & Training site: esourcebook.dealerconnection.com

Also, explore the latest copies of Ford *Frontline* magazine.

Check out the latest product information videos on Ford Tube at fordtube.dealerconnection.com or on the Ford YouTube channel at youtube.com/user/Ford

Ford order guides can be found at fmcdealer.dealerconnection.com



Retailer Education
& Training

© Copyright March 2020 by Ford Motor Company.

Intended for use by dealership personnel to inform consumers and cannot be used in advertising without permission from the Office of the General Counsel of Ford Motor Company. Specifications and descriptions contained within are based upon the most current information available at the time of release.

FRONT AND BACK COVER:

2021 MUSTANG MACH-E PREMIUM SHOWN IN RAPID RED METALLIC TINTED CLEARCOAT.